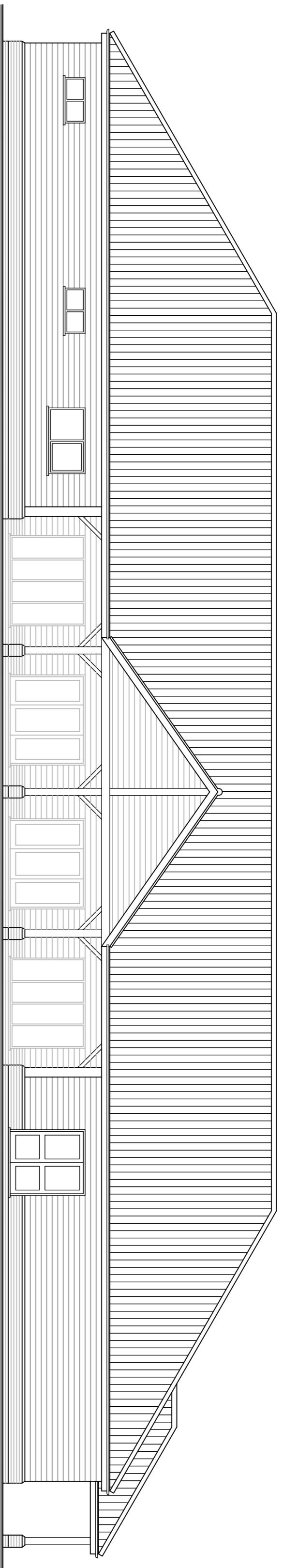
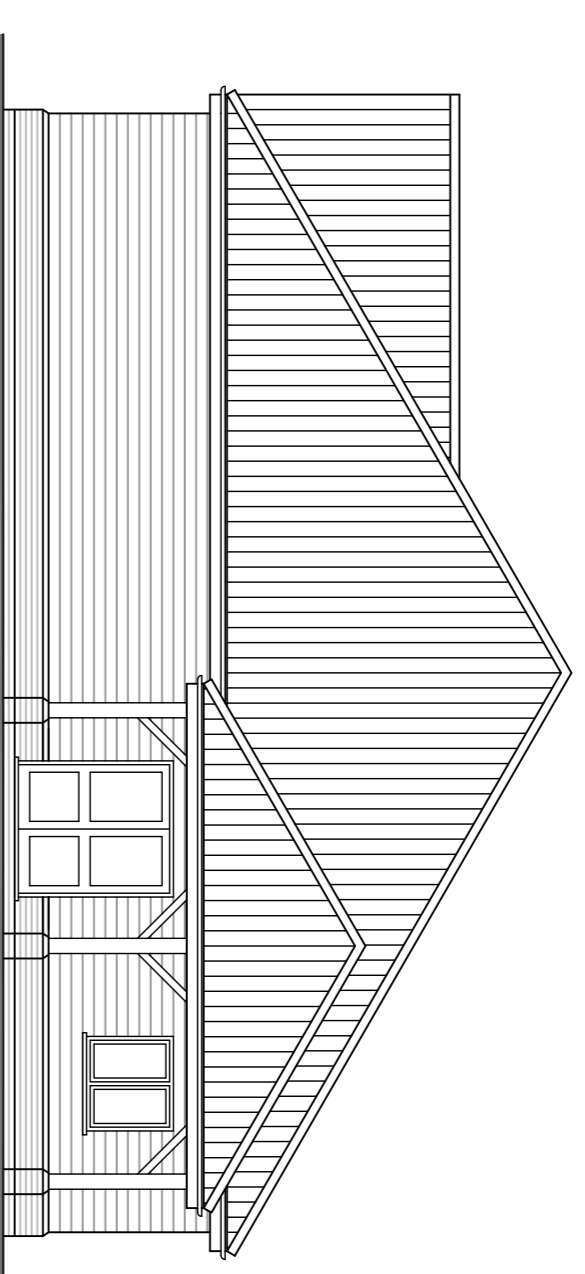


Notes

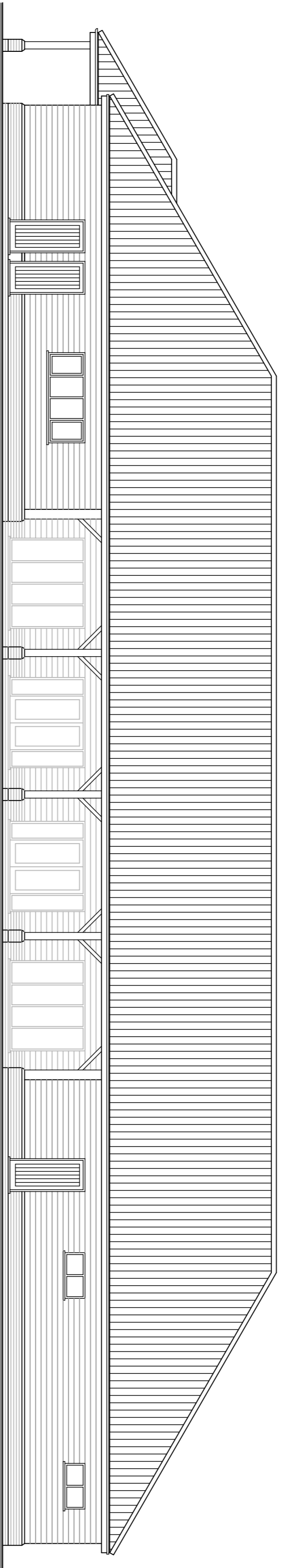
1. The copyright of the drawings is the property of Ian H Bax Associates Ltd and must not be copied without their consent.
2. No measurements to be scaled off the plan, but measurements to be checked on site by the Contractor prior to commencement of works, and any discrepancies to be reported to the Architect of the Design.



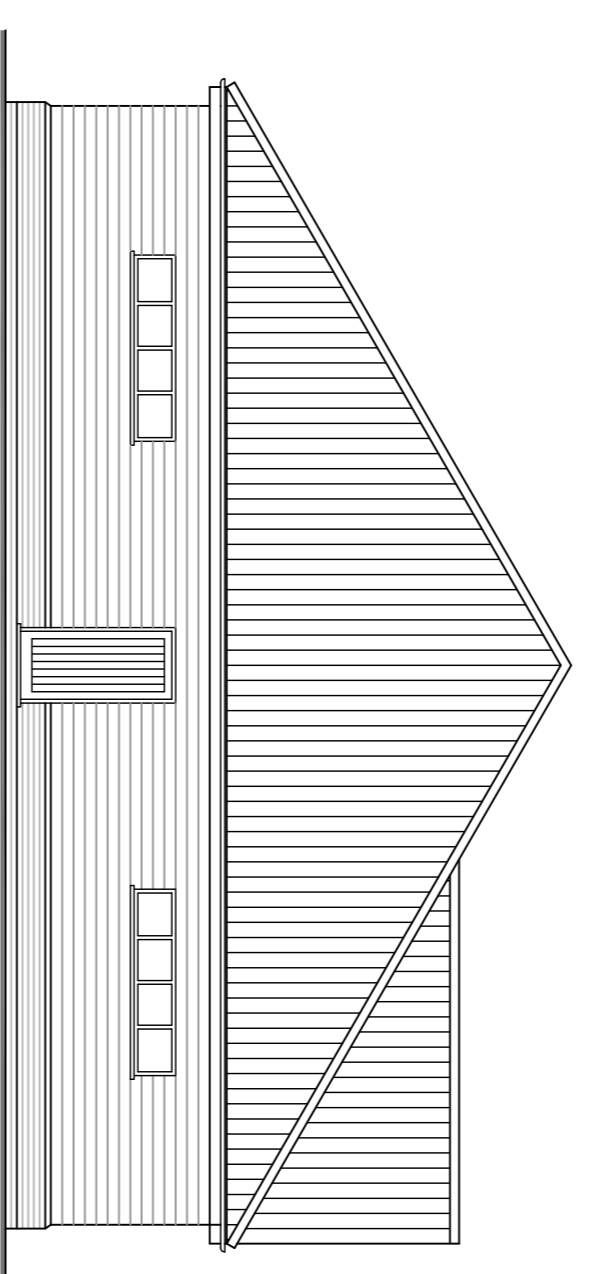
South Elevation 1:100



East Elevation



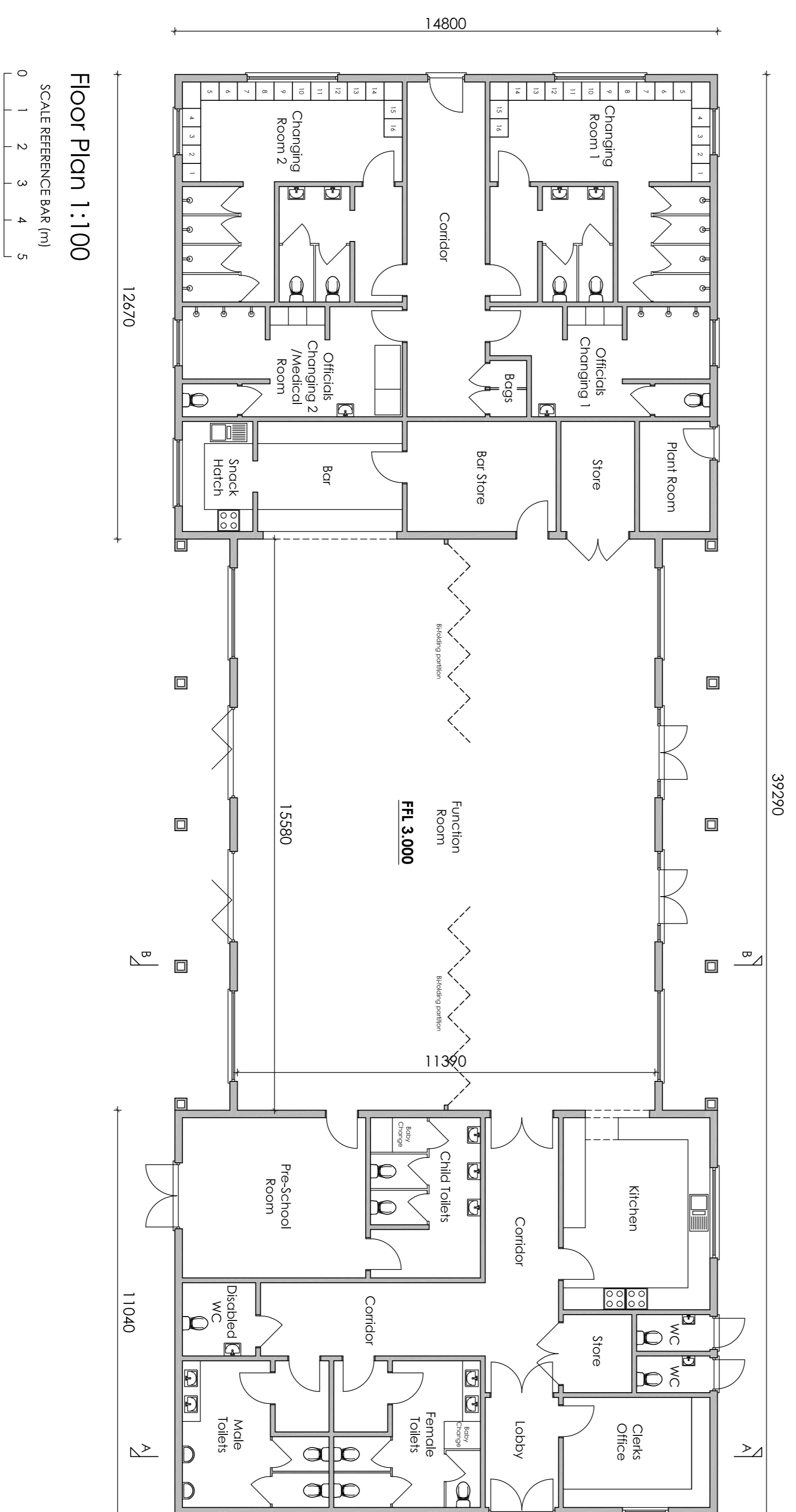
North Elevation



West Elevation

Space Areas

Clerks Office	12.0m ²
WC	2.0m ²
Store	3.9m ²
Kitchen	20.9m ²
Female Toilets	16.0m ²
Male Toilets	16.0m ²
Disabled WC	4.0m ²
Pre-School Room	21.8m ²
Child Toilets	13.1m ²
Main Hall	177.4m ²
Plant Room	5.7m ²
Store	6.0m ²
Bar Store	12.1m ²
Bar	11.8m ²
Snack Hatch	5.7m ²
Changing Rooms	16.3m ²
Showers	8.0m ²
Toilets	6.0m ²
Officials Changing	16.1m ²
Bag Store	1.5m ²
Gross Internal Area	511.0m ²
Gross External Area	581.0m ²



Materials Note

- Walls
Red facing brickwork to brick plinth and pliers.
- Timber frame clad with stained timber boarding.
- Roofs
Roof tiles to be imitation slates.
- Joinery
Window and door type to powder coated aluminium in Anthracite Grey.
- Rainwater Goods
Guttering and downpipe to be black UPVC.
- Fascias, Soffits and Bargeboards
To be timber stained to match boarding.

IAN · H · BIX
M · C · I · A · T
ARCHITECTURAL AND
BUILDING CONSULTANTS
SANDPIPER HOUSE, LETTE WAY, WEST WINCH
KING'S LYNN, NORFOLK PE33 0ST
TEL: 01553 844071 FAX: 01553 844078
EMAIL: info@ianhbix.co.uk WEB: www.ianhbix.co.uk

Project
Proposed New Community Hall
Clenchworthon Playing Field
Hall Road
Clenchworthon

Drawing Title
Proposed Plans and Elevations

Scale 1:100 @ A1

Date August 2017

Drawn JT

Drawing No. **1936-02A**